

- 1 General view.
- 2 Section and drawing showing the organization of the different height levels.
- 3 General view.

Vacation House at Oxylithos, I

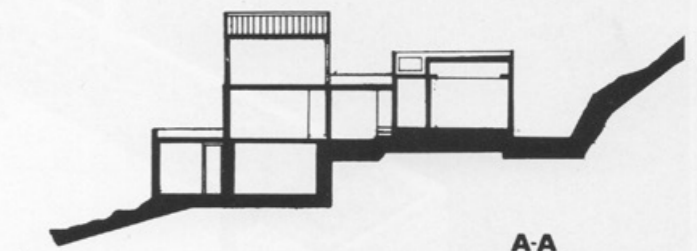
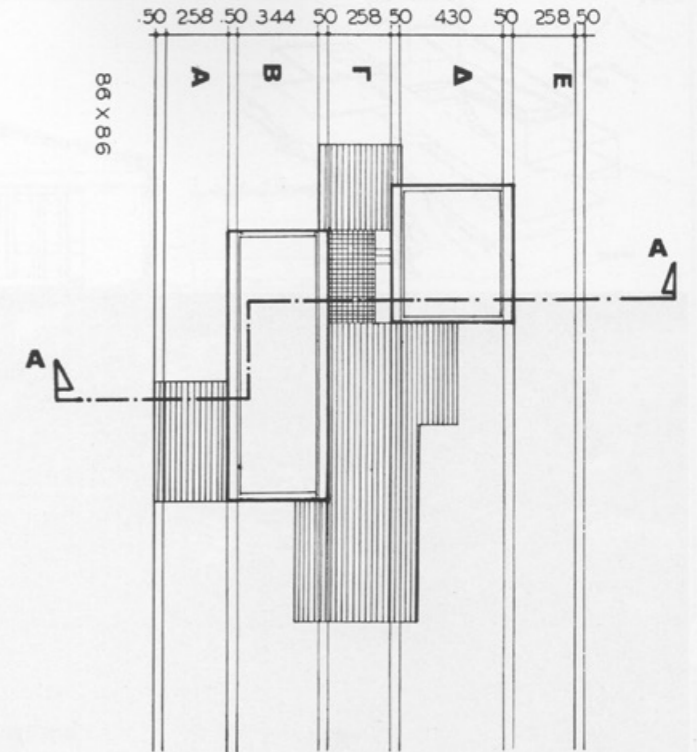
Euboea, Greece 1973

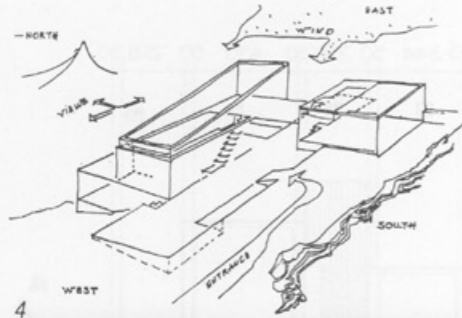
The house is built on a steep hill; to the North is the village of Oxylithos, to the East is the sea. It often rains in the area and the wind usually blows from the East during the summer. The remote location means that the house cannot be supplied with either electricity or water. Thus, a cistern was built and portable gas equipment (lamps, cooker, and refrigerator) were installed. The indoor spaces were grouped in zones, each one having an East-West axis running parallel to the slope and coinciding with the direction of the prevailing wind.

The external, semi-covered, and internal spaces are counterchanged within the zones. The main zone contains the living room, together with the dining and sleeping area, a kitchen, and basement guest room. The master bedroom, bathroom, and storage closet are located in the secondary zone.

Three zones of open and semi-covered spaces, each of a different character, create the frame for the zoning of indoor spaces, and offer different points of view and orientation. The central open-air zone terminate in a balcony with a magnificent view looking eastward and in a terrace with a large, built-in table and benches facing the West. This terrace is covered by a climbing vine. In order to protect this central zone from the violent East winds, a large door is placed on its eastern side. Thus, this open-air space is available as a daytime living space under somewhat different weather conditions.

This construction is based on an eighty-three-by-eighty-three-centimeter grid. The external walls were initially intended to be thirty centimeters thick, but were enlarged to fifty centimeters with the addition of various built-in shelves. The plaster-walled living room is covered by a beam roof.





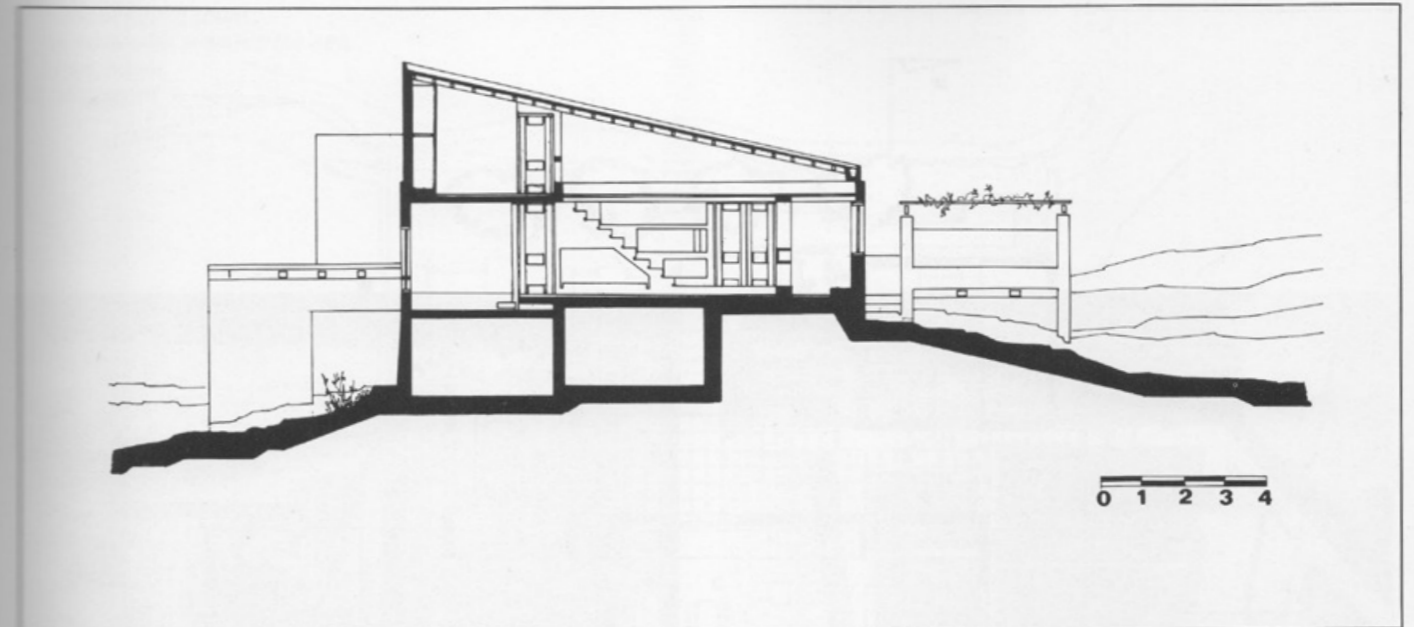
House at Oxylithos I

- 4 Sketch showing the climatic orientation of the house.
- 5 General view from the south.
- 6 Section.
- 7 Lower level plan.

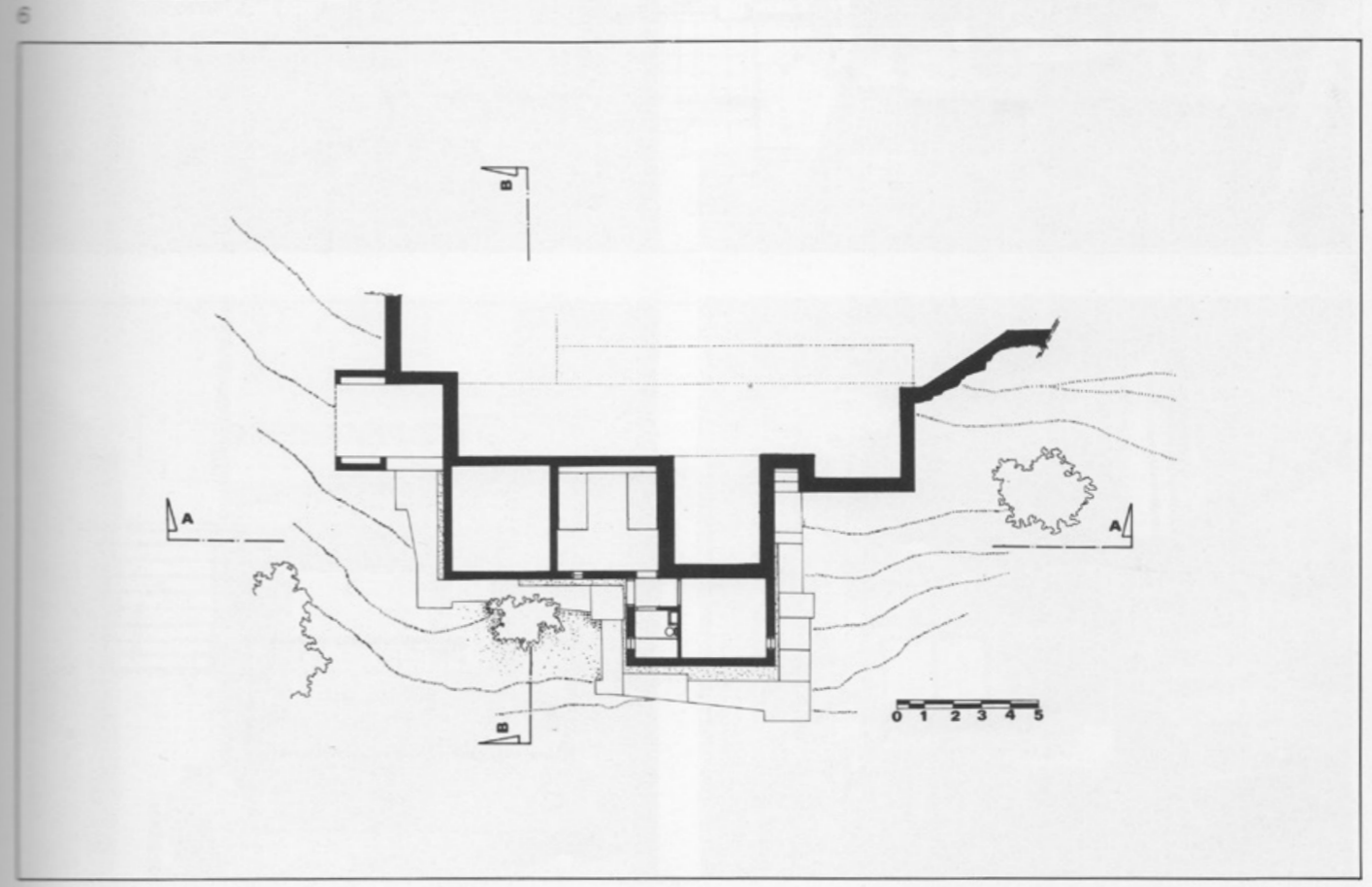
54



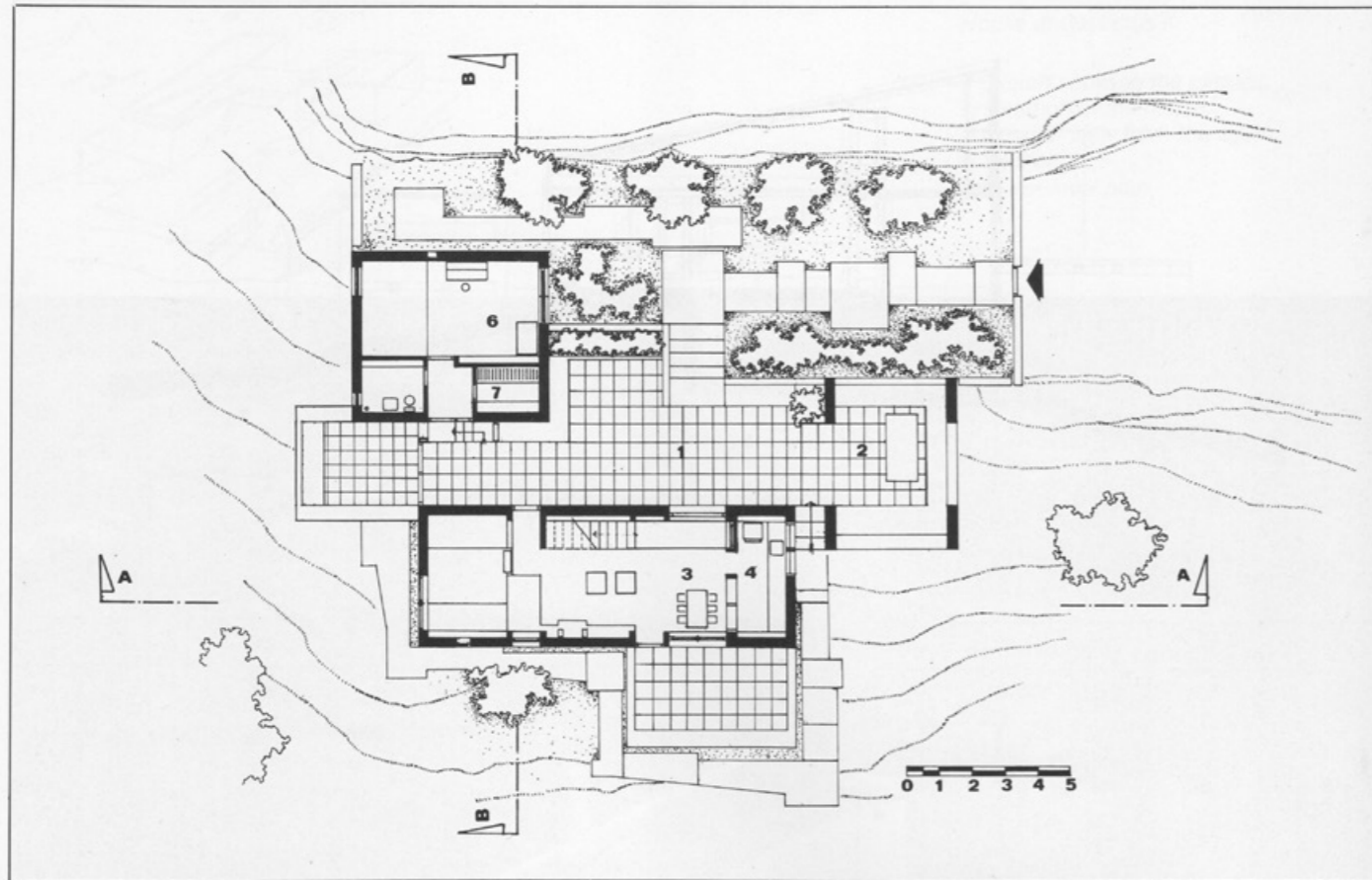
5



55



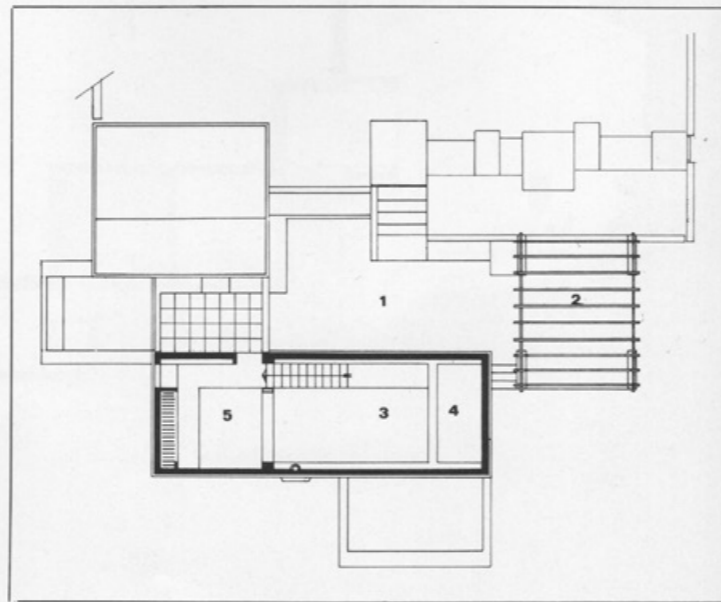
7



8

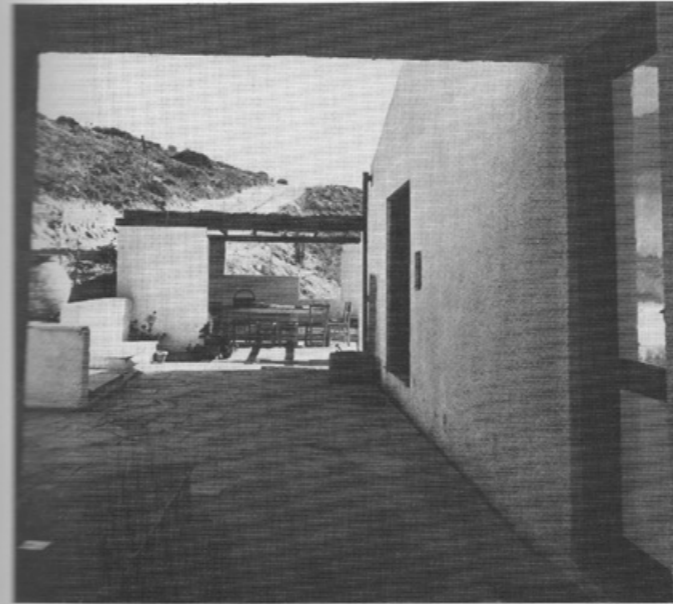
House at Oxyliothos I

8 Ground floor plan.
9 Mezzanine plan.

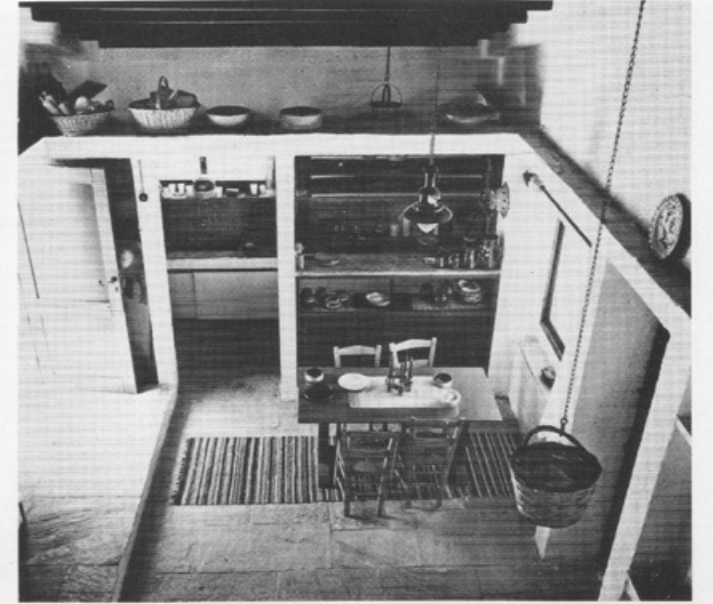


9

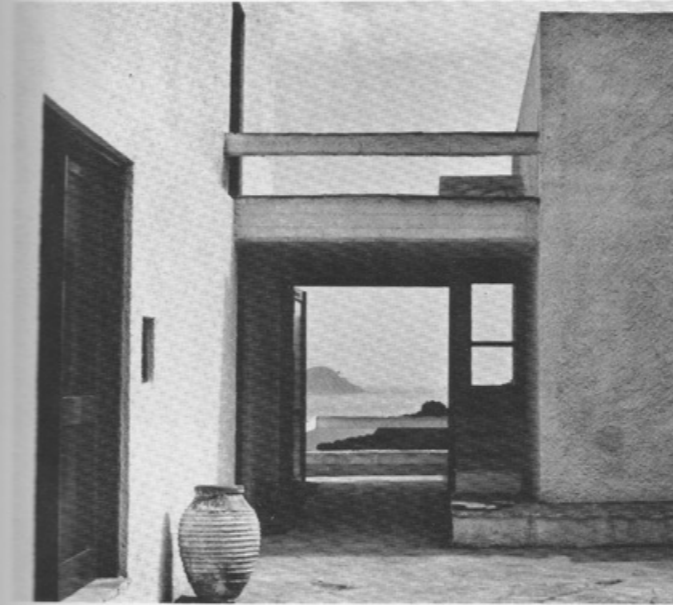
10 Outdoor sitting room.
11 Veranda view towards the sea.
12 Dining room.
13 Living room.



10



12



11



13