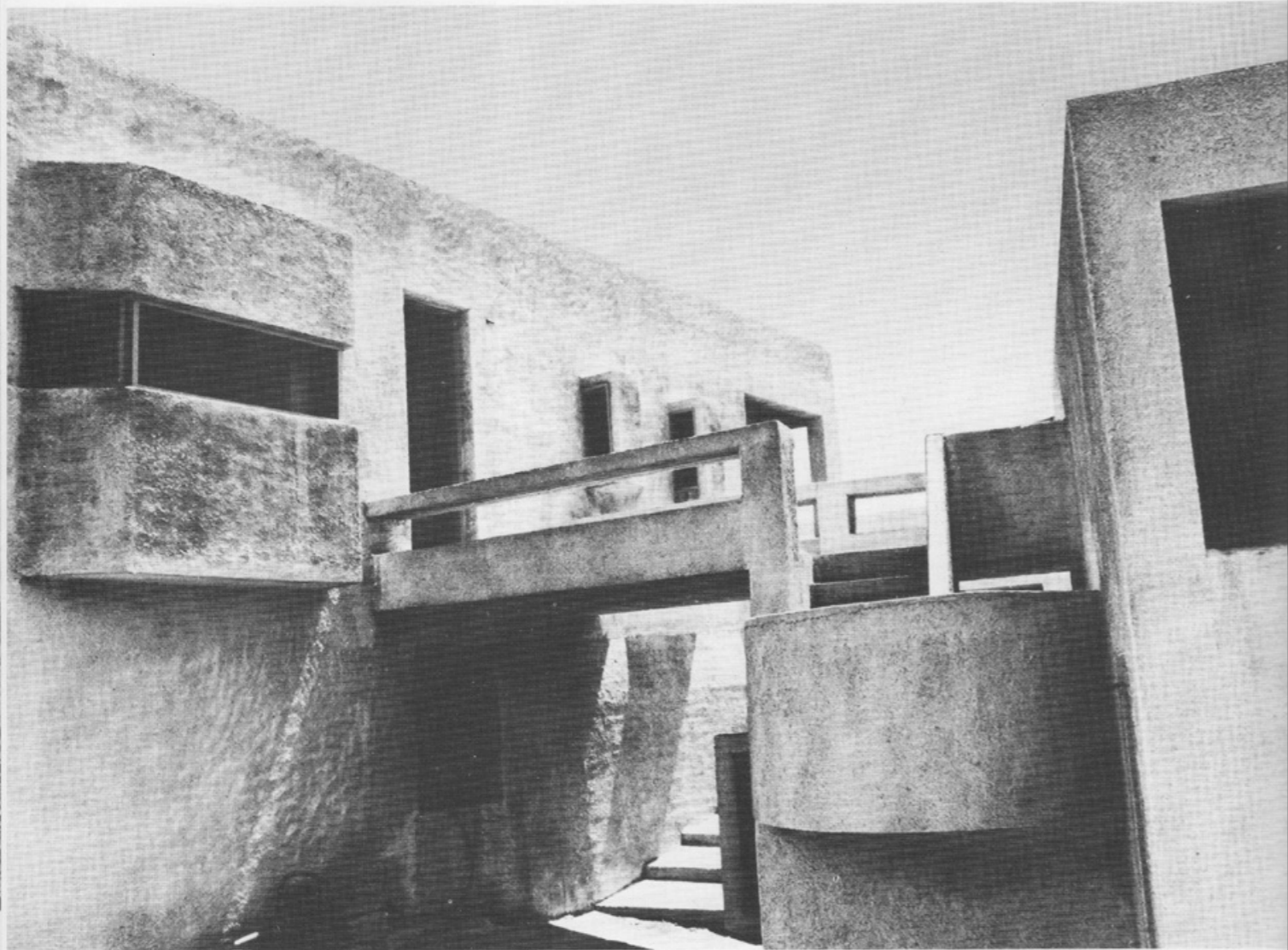


- 1 Entrance.
- 2 Model.
- 3 Site sketch.
- 4 Plan.



Vacation House and Atelier at Oxyliθος, II

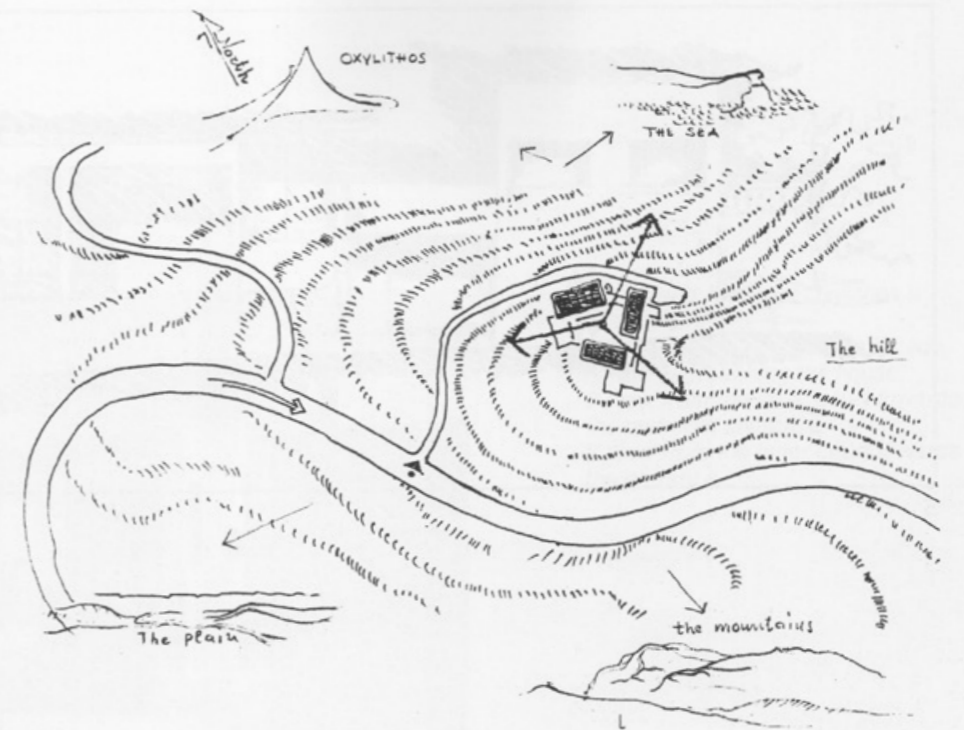
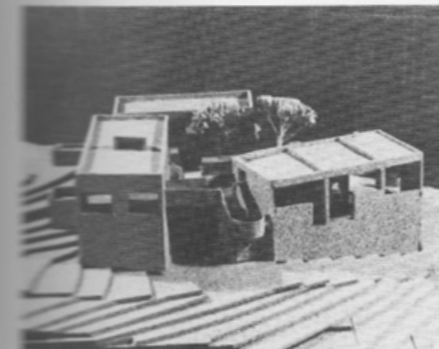
Evboea, Greece 1977

The site is located on the upper part of a slope, which extends from the river and runs up to a range of mountains which define the area.

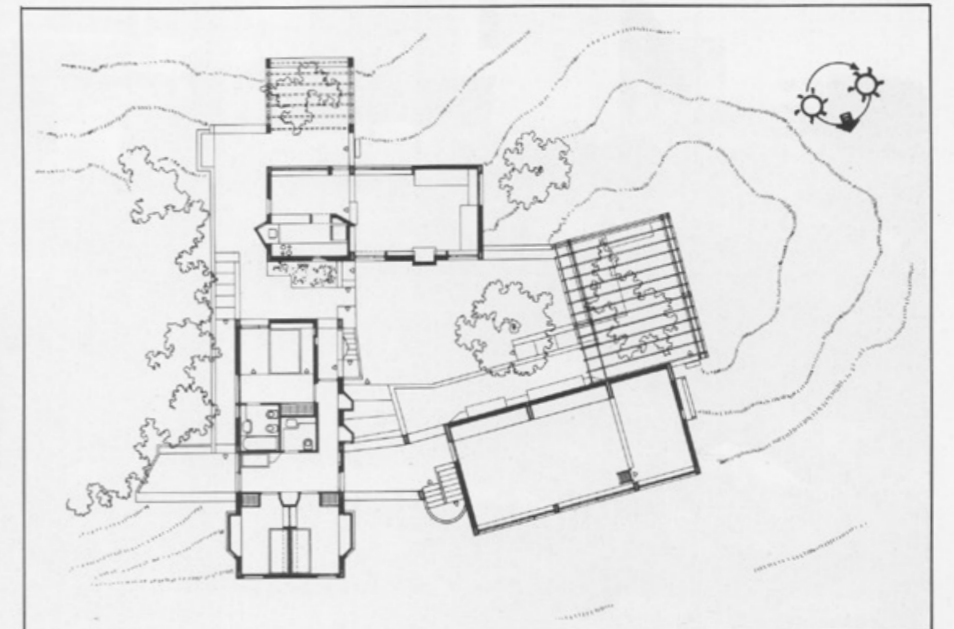
The house occupies a commanding position easily visible from all points in the plain below. The landscape is exposed to strong winds which come off the sea and leave no tree standing upright. The atelier space acts as a barrier against these winds, although it has windows on the side facing the sea.

In the back, a well-protected outdoor space is formed, surrounded by the two other buildings, the living room hearth, combined with the kitchen, and the master and children's bedroom unit.

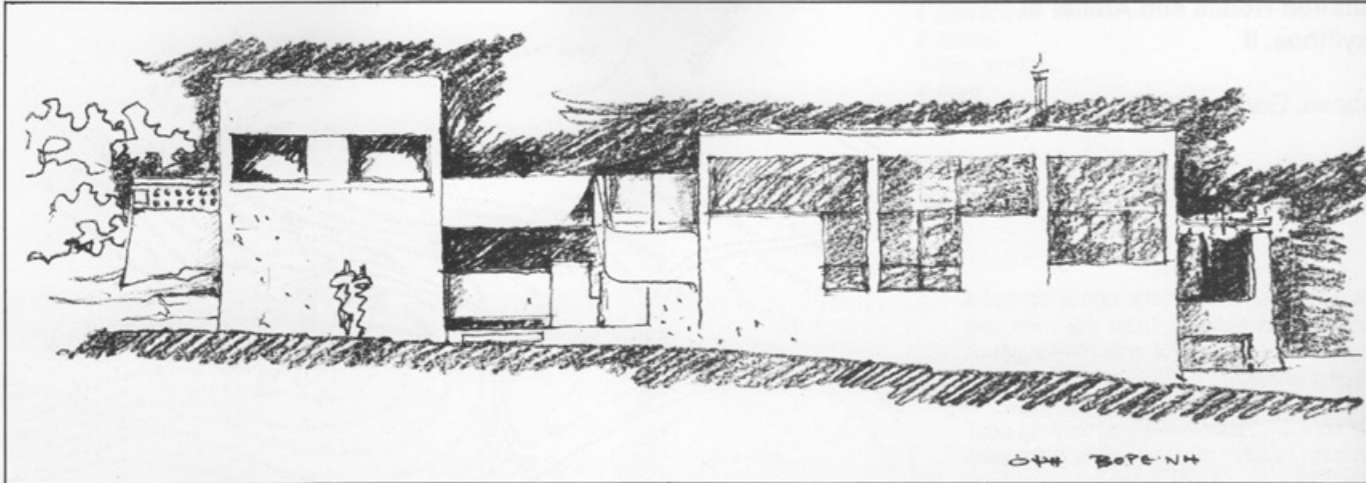
The open space, landscaped as descending terraces, creates a smooth transition from the exposed natural landscape to the organized outdoor space, and finally to the closed internal volume.



3



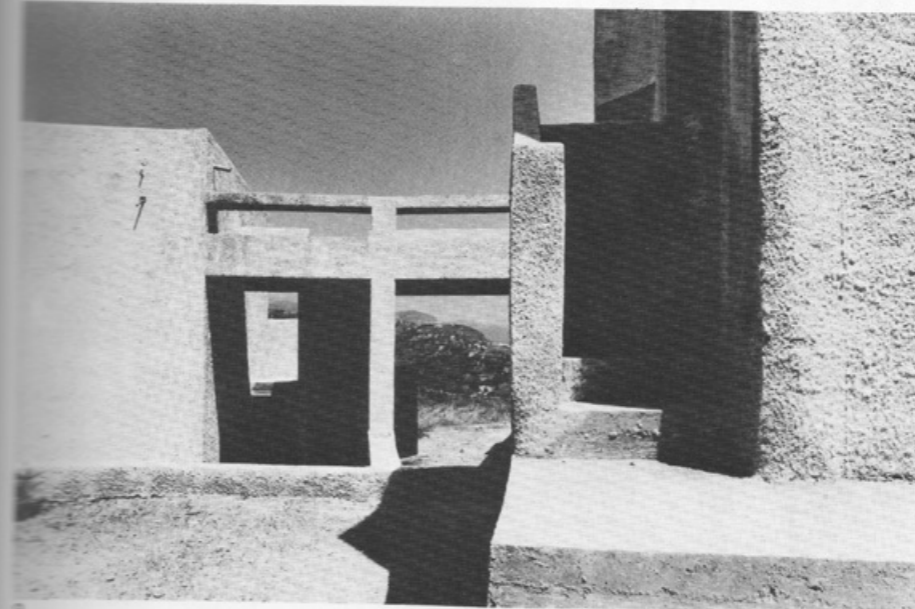
4



5



6



- 5 Study sketch of the north facade.
 6 Path approaching the house.
 7 View from the inner court towards the bedroom staircase.
 8 View from the inner court towards the entrance.