

1 Southwest aerial view.
2 Site plan.



Archeological Museum of Chios

Chios, Greece 1965

This design received the first prize in a Pan-Hellenic competition. Situated far from the downtown area and the other public facilities of the city, the Museum is built at the end of a pathway leading from the port. There is a twelve-meter change in level across the site from the eastern edge to the western boundary flanking the street leading to the port. In general, the Museum had to be conceived as an autonomous and attractive center of cultural activity.

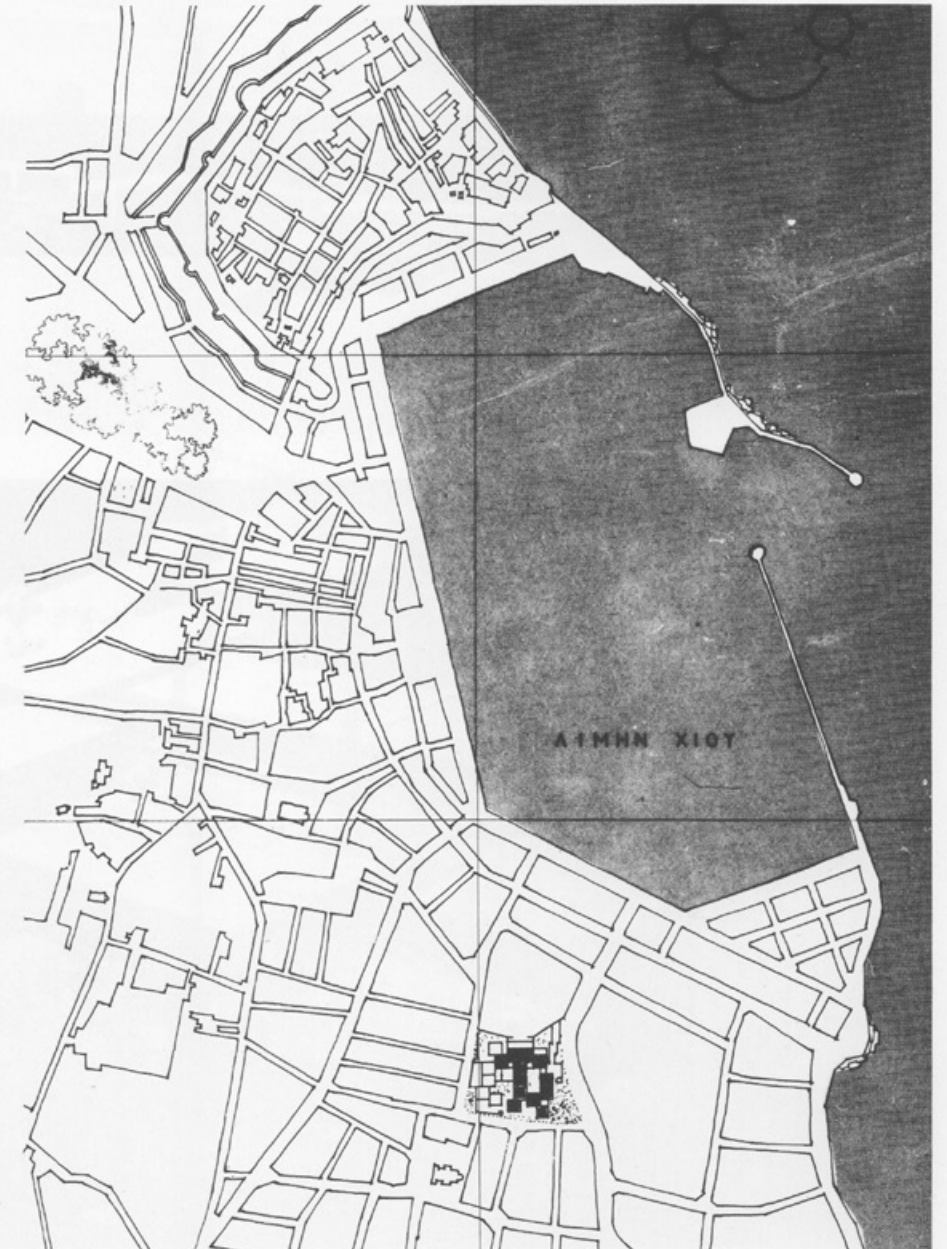
The basic aims of the design were:

1. to integrate the building into its context;
2. to create an interpenetration between the adjacent outside space and the Museum's inner volume;
3. to provide for a certain fluidity of movement between the exterior and interior;
4. to assume a fairly simple level of construction.

The program provided for a curatorial office and a custodian's residence, a series of four main exhibition halls devoted respectively to the Archaic, Classical, Early Byzantine, and late Byzantine periods, a temporary exhibition room, workshops, and a number of storage rooms.

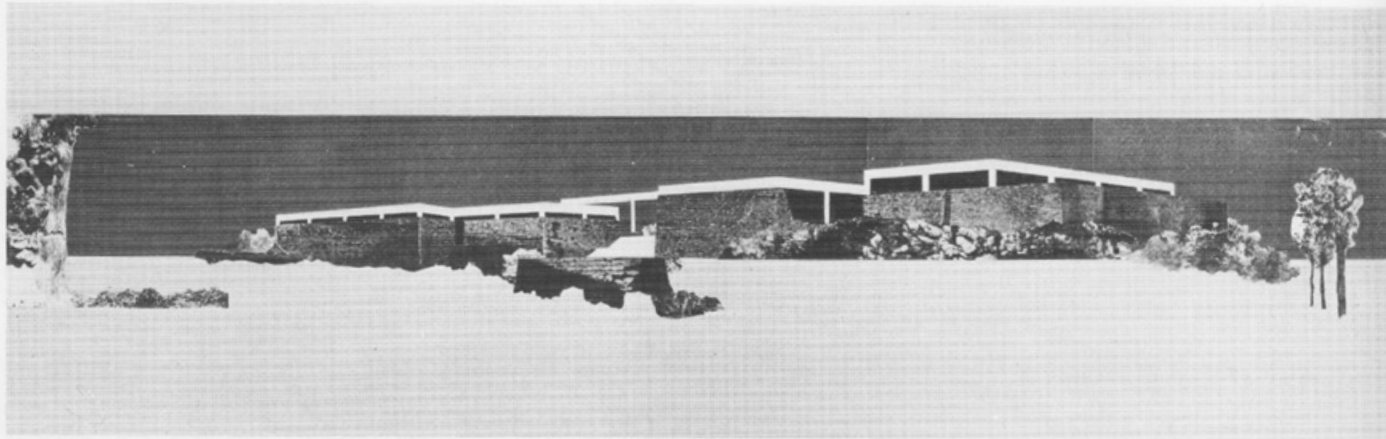
These spaces were organically arranged so as to provide for an open, modifiable plan. The adjacent public space is allowed to extend into the Museum's central courtyard. The resultant architectural promenade from the street to the main courtyard is the primary spatial concept around which the entrance and the exhibition sequence are organized.

The scale of the old town of Chios surrounding the Museum comprises one- and two-storey houses with small courtyards, and narrow streets. This existing context led to the notion of assembling the Museum out of repeated, relatively small units made up of fourteen-by-fourteen-meter modules.

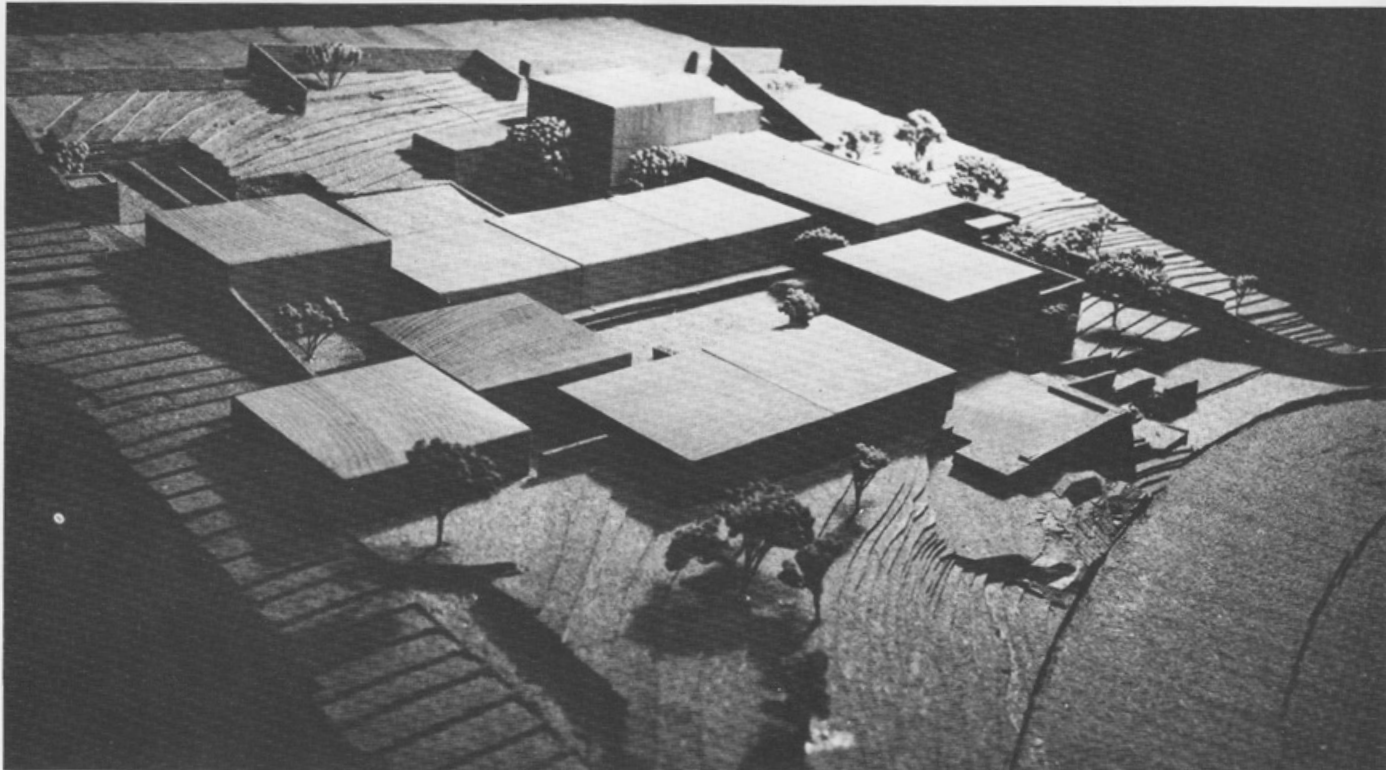


Archaeological Museum of Chios

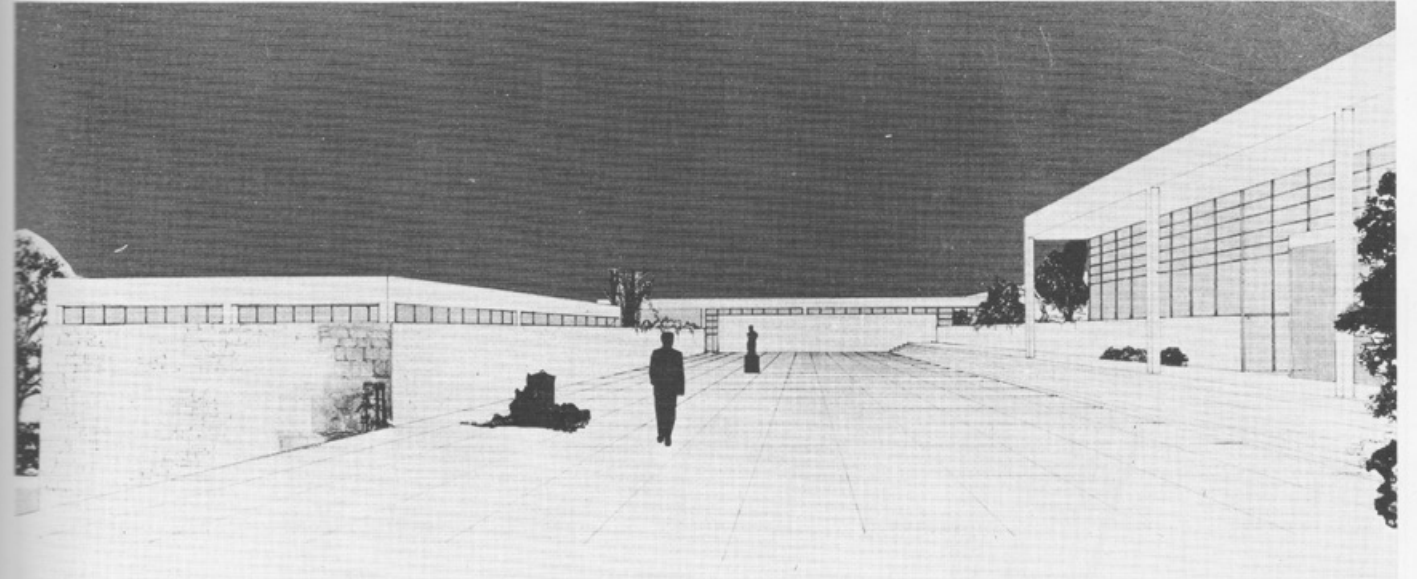
- 3 Study collage.
- 4 Study model.
- 5 Study collage of the inner court.
- 6 Site plan.



3



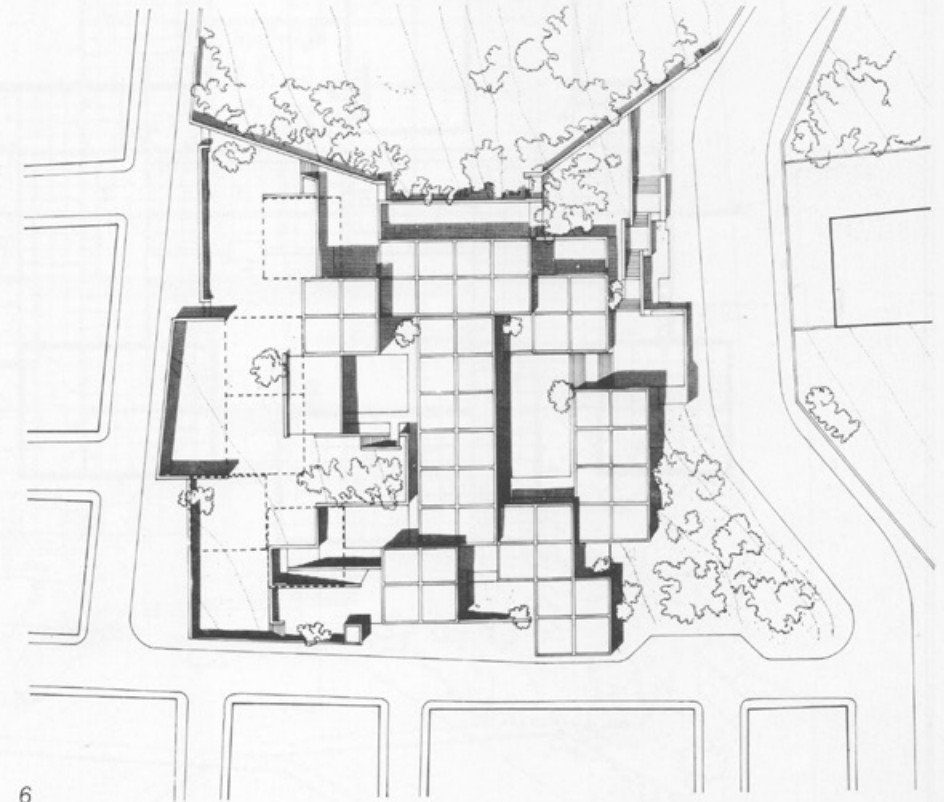
4



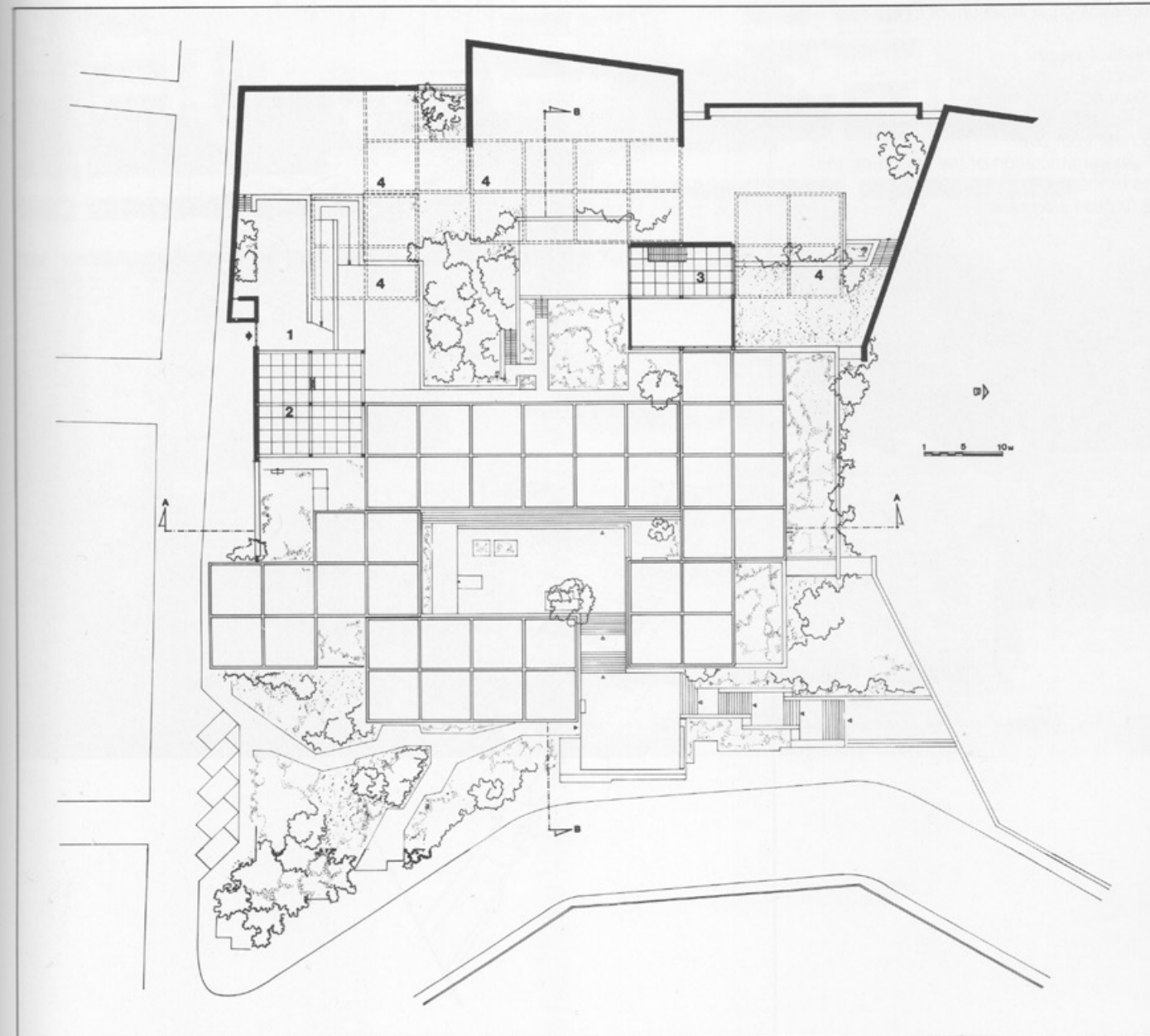
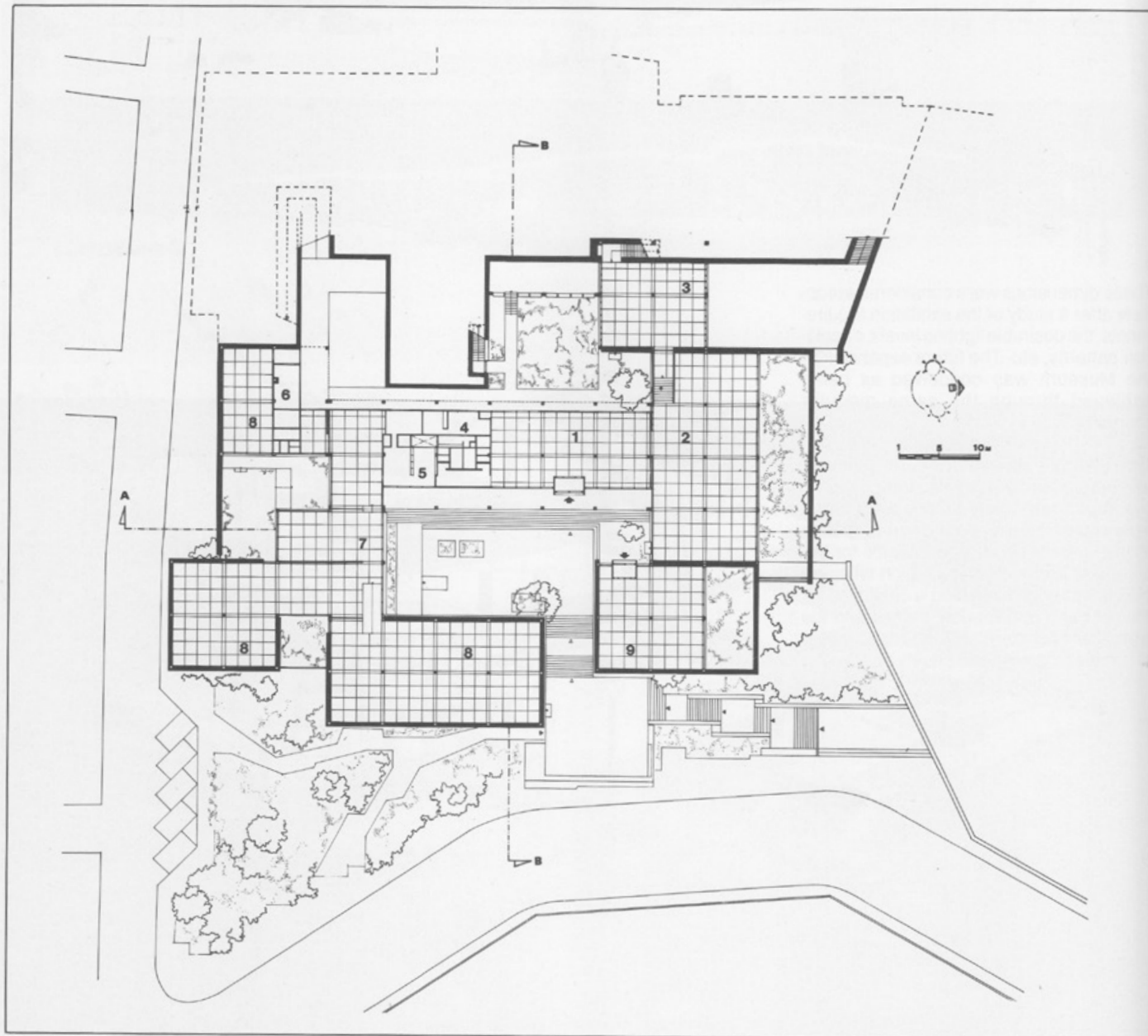
5

These dimensions were considered appropriate after a study of the exhibition requirements, the desirable lighting levels, circulation patterns, etc. The future expansion of the Museum was conceived as being achieved through the same modular elements.

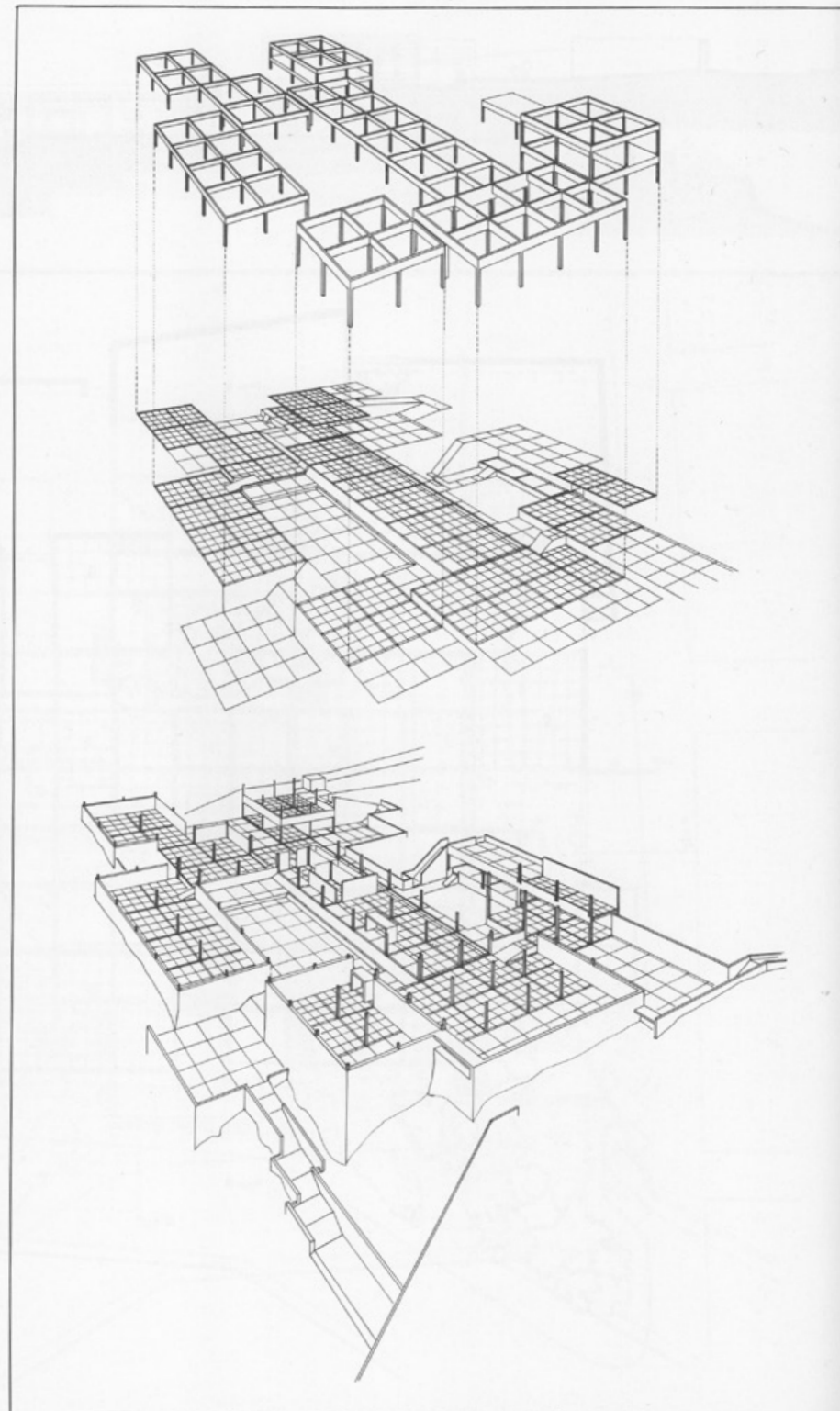
The building is constructed out of exposed, reinforced-concrete beams, and local load-bearing, ochre-colored stone walls, internally and externally. Chios marble is used for the interior floors, and in strips for the courtyard areas, in combination with sea pebbles. Oregon pinewood is employed for the door and window frames and the permanent furniture. The entrance doors are made of galvanized sheetiron.



6



Previous page:
 7 Section.
 8 Ground floor plan.
 9 Section.
 10 First floor plan.
 11 The organization of the structure, the
 use of the grid.
 12 Access staircase.



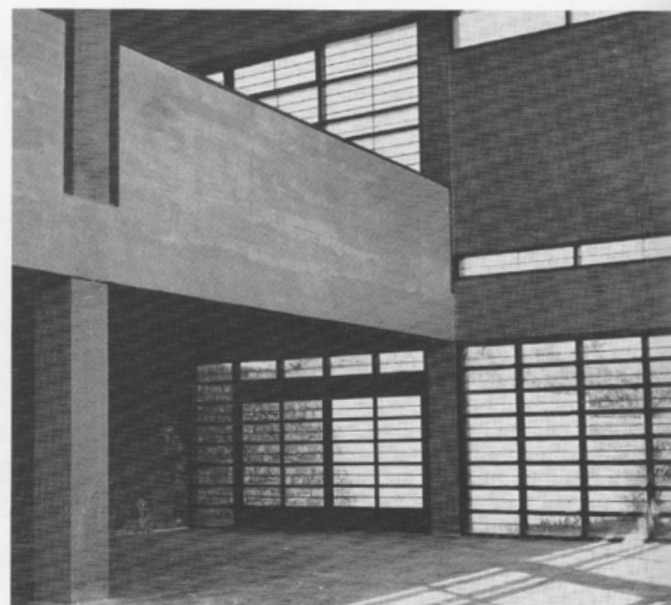
Archaeological Museum of Chios

- 19 Exterior detail viewed from the south.
20 View of the main exhibition hall from the entrance lobby.
21 View of exhibition hall and mezzanine.
22 Window grid and terraces.

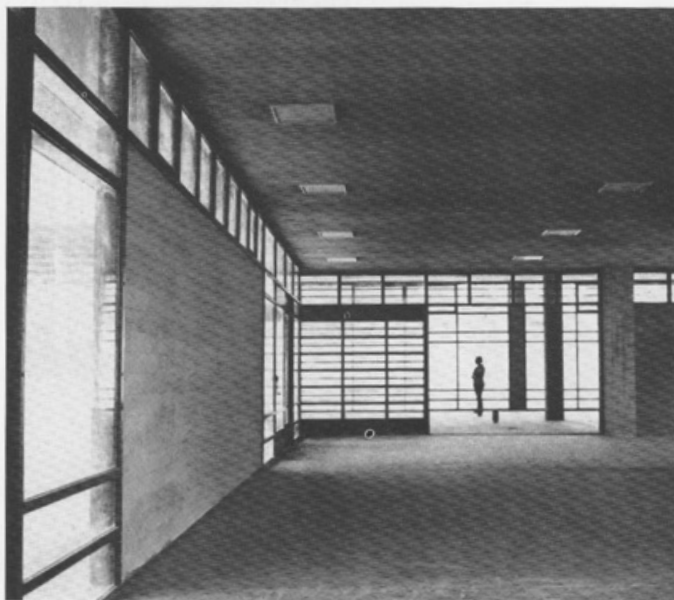
96



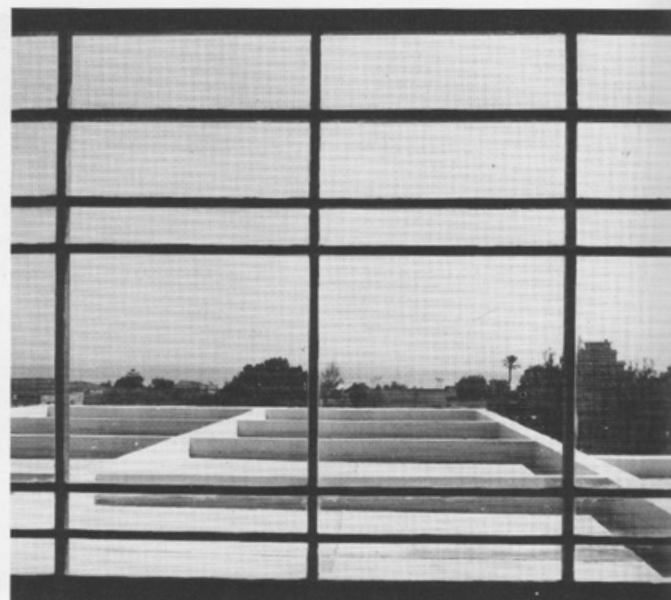
19



21



20



22