

Hotel Lyttos

Anissaras, Crete 1974, 1976

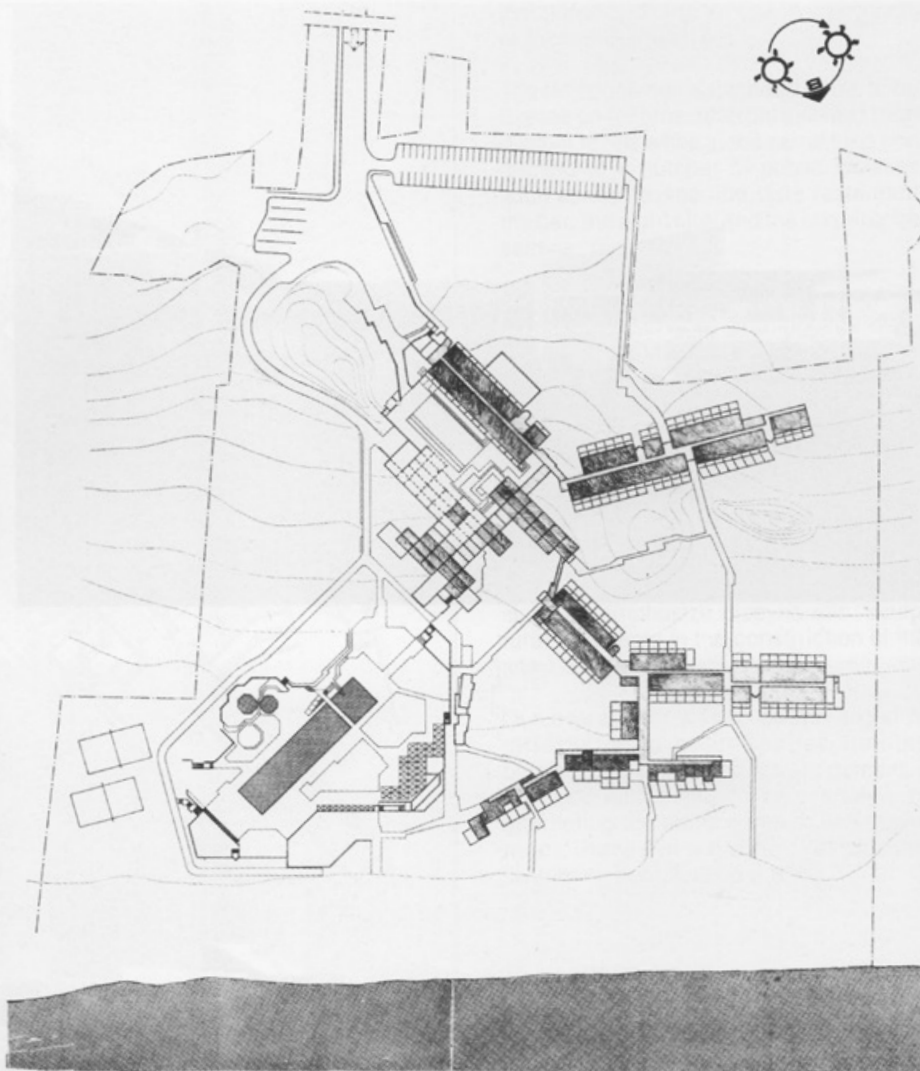
This complex is built on the North side of the Cretian seacoast on an almost flat site without trees or rocks. This windswept site, without any particular character, is situated next to a beach which extends for some distance without interruption. Except for a few scattered houses, no surrounding settlement impinges on the landscape.

Various regulations and the logistics of the hotel trade demanded the development of a single hotel structure. In order to break up the bulk of the building, we decided to design a unified structure under one roof.

Since rather limiting conditions were imposed by the building regulations and by the economic necessity of having double-loaded corridors, every effort had to be made to avoid the monotony of cellular repetition and the uniformity that results from endless and characterless corridors. As a result, we tried to differentiate between different groups of rooms according to whether they were reached by closed, open-air, or covered corridors, or whether they were provided with balconies, small private gardens, or terraces.

These variations entailed the use of canopies and balconies and these in their turn permitted the grouping of certain rooms into "blocks" which helped to break up and syncopate the overall mass of the hotel.

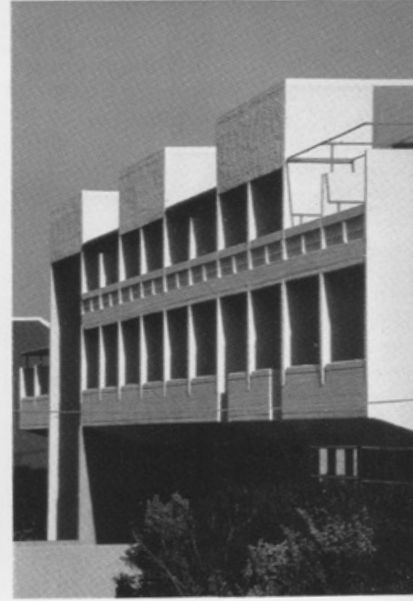
At the same time, we articulated the circulation space of the hotel so as to clearly distinguish between the main entry, the reception hall, and the attendant path leading from the reception to the beach. We attempted to give specific identity to certain elevator and stair lobbies by opening them to the surrounding landscape and unexpected views. To a similar end, we varied the rhythmic interpenetration of



1 Site plan.



2



4

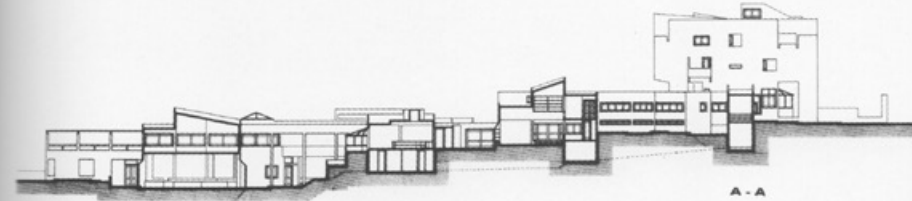


3

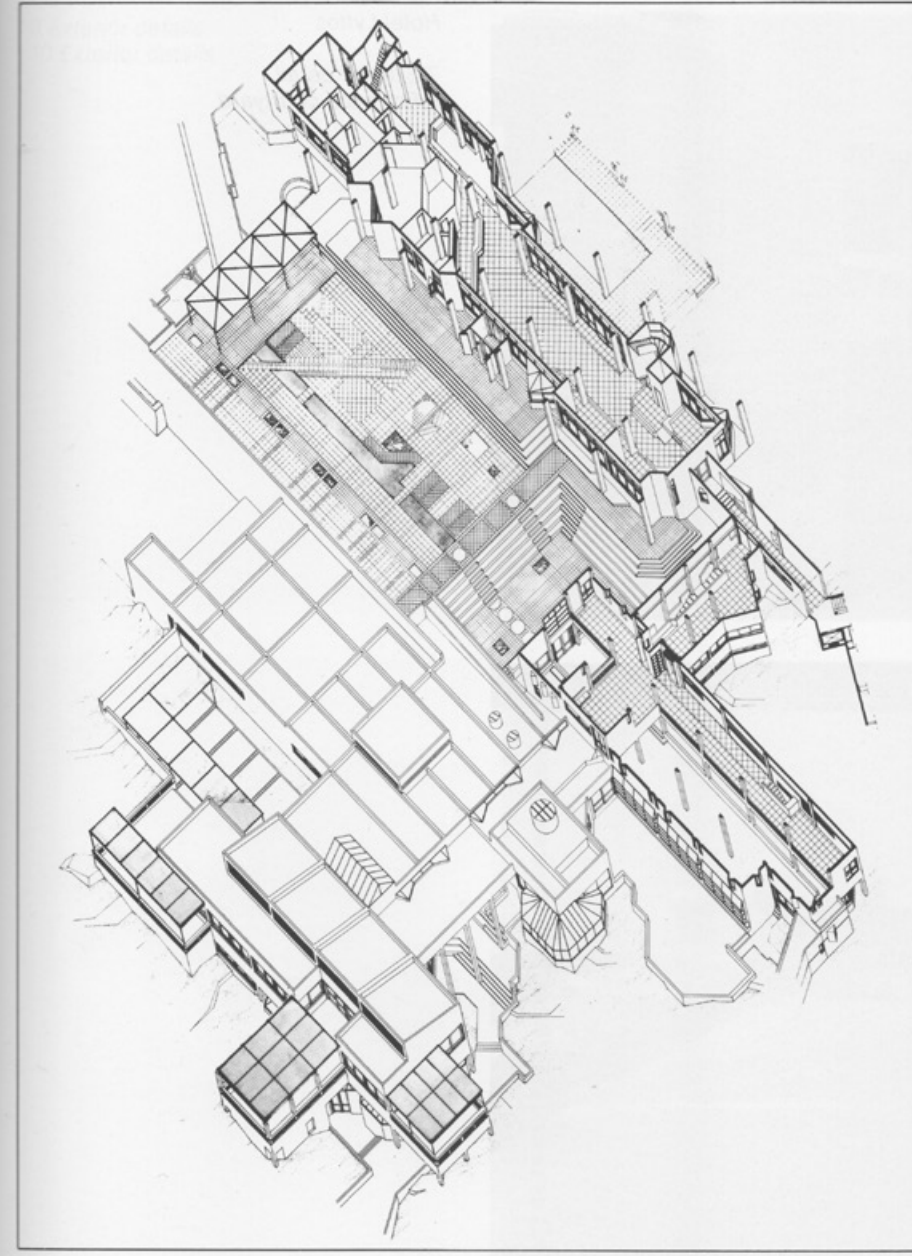
Hotel Lyttos

- 2 Exterior detail.
3, 4 Main hotel building. Details.
5 Section of the nightclub and service corridor.
6 Ground floor axonometric.

5



6



the indoor and outdoor space and density of the natural light, etc.

The reception hall is the heart of the hotel. It gives on to three different aisles at three distinct levels while at the same time connecting to a number of public facilities, such as the lounge, the vista restaurant, the bar, the night club and the conference/seminar room.

An underground service corridor for mechanical services and luggage distribution runs under the entire building.

Throughout the hotel, great attention was given to the differentiation of surfaces in many different ways, varying from smooth and brilliant, to smooth and matte. We used these different surfaces so as to stress various volumetric and superficial relationships and even, on occasion, to mark a route or correct a proportion, or simply to emphasize idiosyncratic "sculptural" elements in the construction of the site.

Our overall aim was to create a grid of differentiated open spaces running between the public and private domain, a network which would be capable of alternating the pattern of rest and movement, between taverna, restaurant, swimming pool, and beach.



7

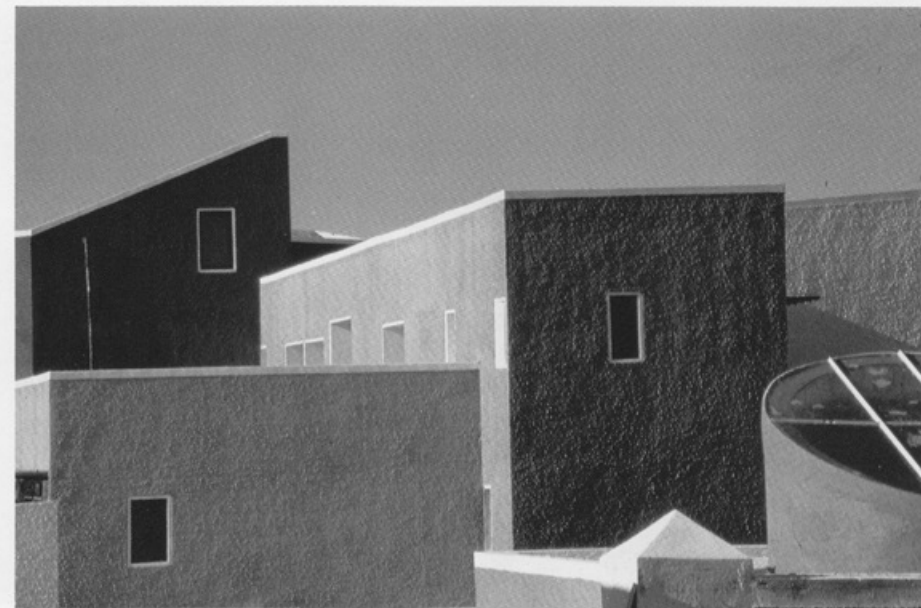
Hotel Lyttos

7 Exterior detail.
8 Entrance courtyard.



8

9 Exterior details.
10 Exterior details.



9



10



11



12

Hotel Lyttos

- 11 Courtyard staircase.
- 12 Detail of the courtyard paving.
- 13, 15 Details of the covered path leading from the reception area to the sitting areas.
- 14 Roof view.



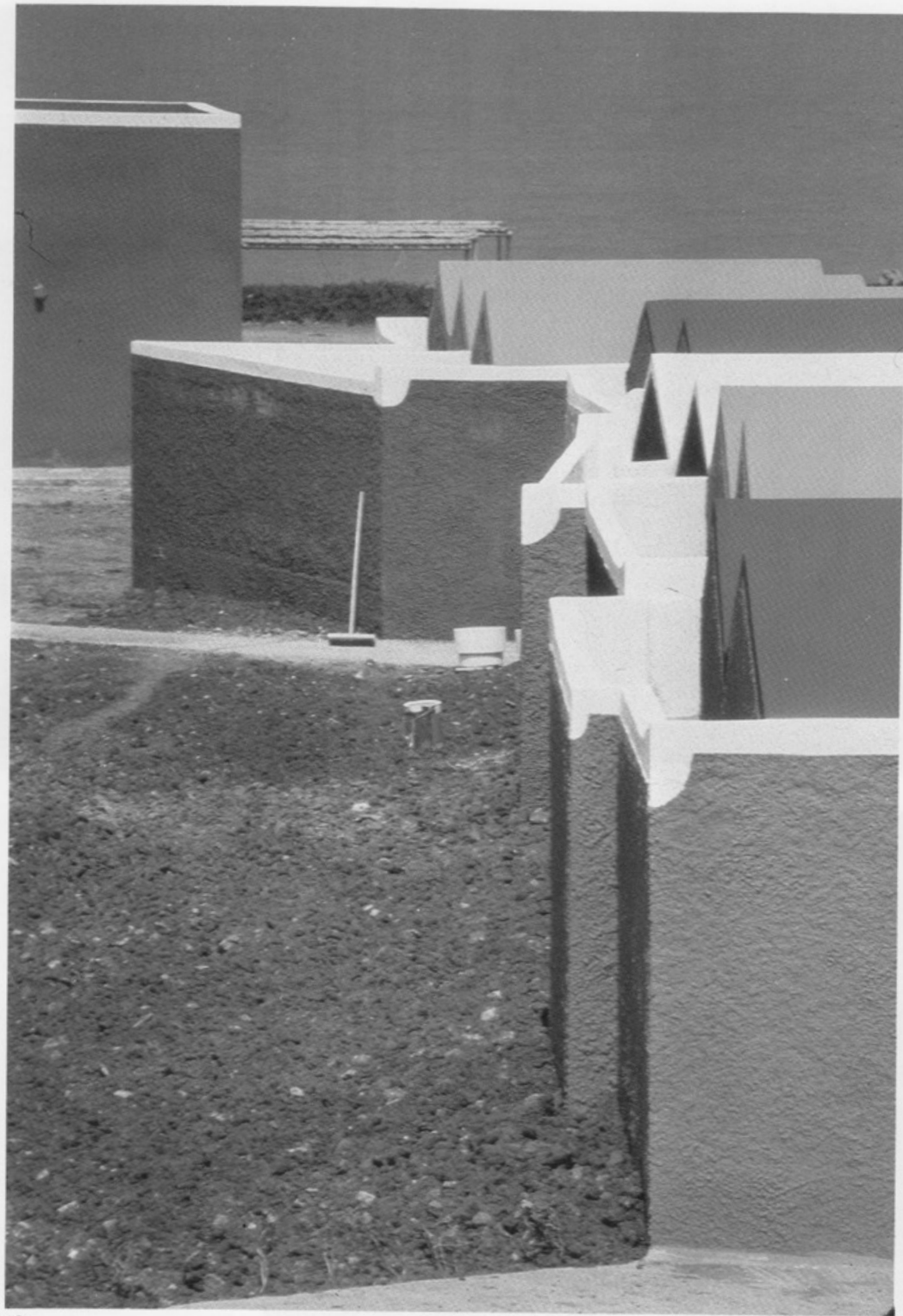
13



15



14



Hotel Lyttos

16 Roof detail.

17 Lower level axonometric of the sitting areas, restaurants, and kitchen.

